

1805

1940/1

1940

1941/1

76

850

1806

1808

GE _w	II
0,8	1,6
GD 15°35'	a

1809

GE _w	II
0,8	1,6
GD 15°35'	a

GRUN

1813/2

1813

1898/5

Werk

Lanus

1941

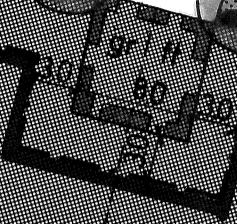
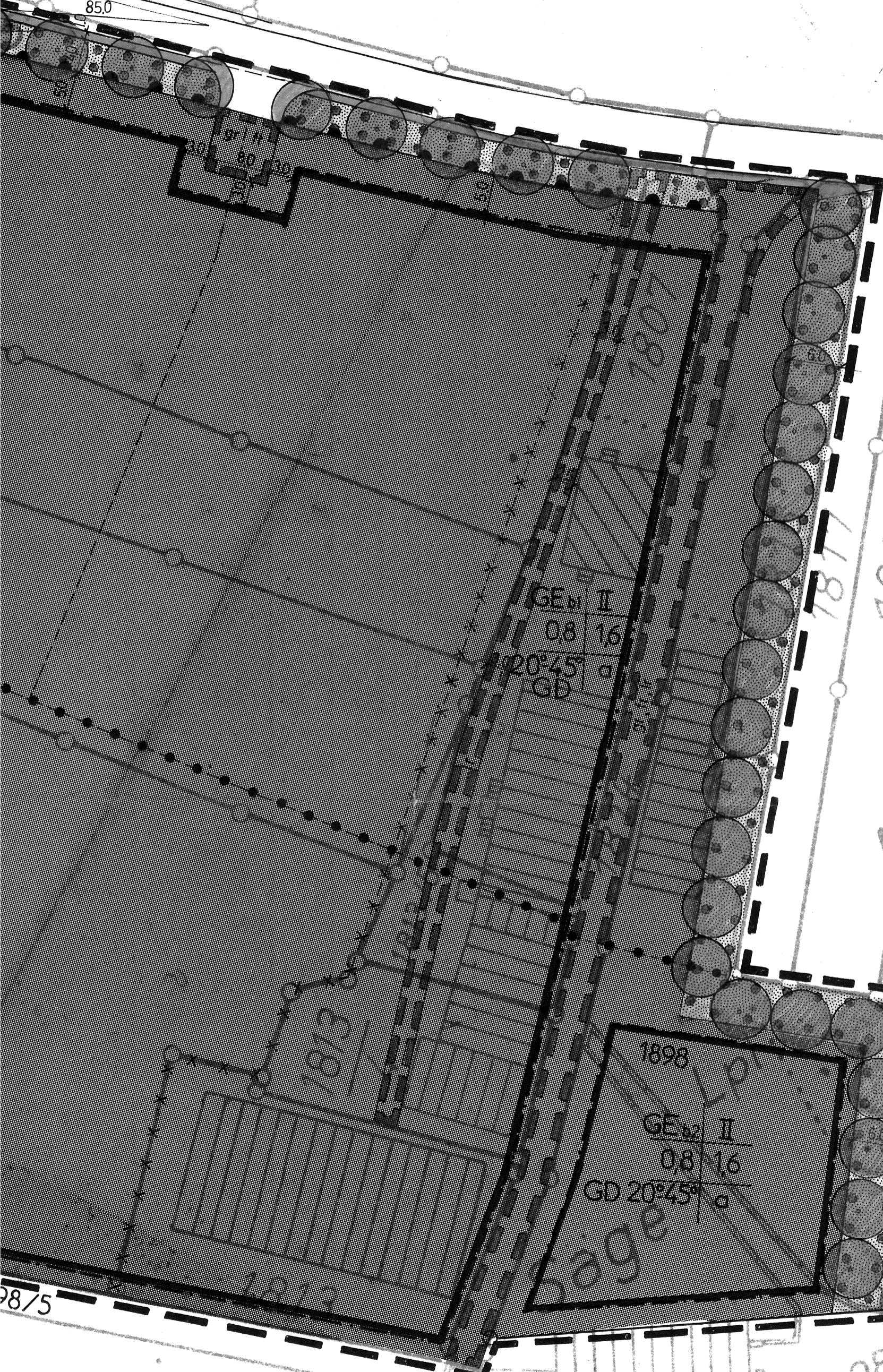
1947/1

1947

1942

1943

850



GE II
08 16
GD 20°45' a

1898
GE II
08 16
GD 20°45' a

1817

1818

1819

1821

1822

1813

Alameda

1823

98/5

1898
5